



UnityOneCloud For Service Providers

UNIFIED MULTICLOUD MANAGEMENT WITH UNITYONECLOUD

UnityOneCloud is a multi-tenant SaaS platform that is securely deployed per service provider. Service providers can use it as a custom portal for their customers to enable them to manage their data centers and entire multicloud footprint (including private clouds and public clouds) remotely.

It allows your customers to manage and visualize all the aspects of their data center footprint in their colocation cabinets within your data centers. It can be customized to deliver your specific catalog of services along with pricing, SLA, service request, service delivery, and lifecycle management of the managed service.

BENEFITS



Revenue Expansion

Drive higher retention and revenue expansion for your customers by providing them with the ability to request and consume service from the service provider easily and faster.



Higher SLAs

Drive higher SLAs by creating reporting analytics on service delivery. Monitor and audit through customizable dashboards and receive regular alerts about your data center devices.



Managed Service Delivery

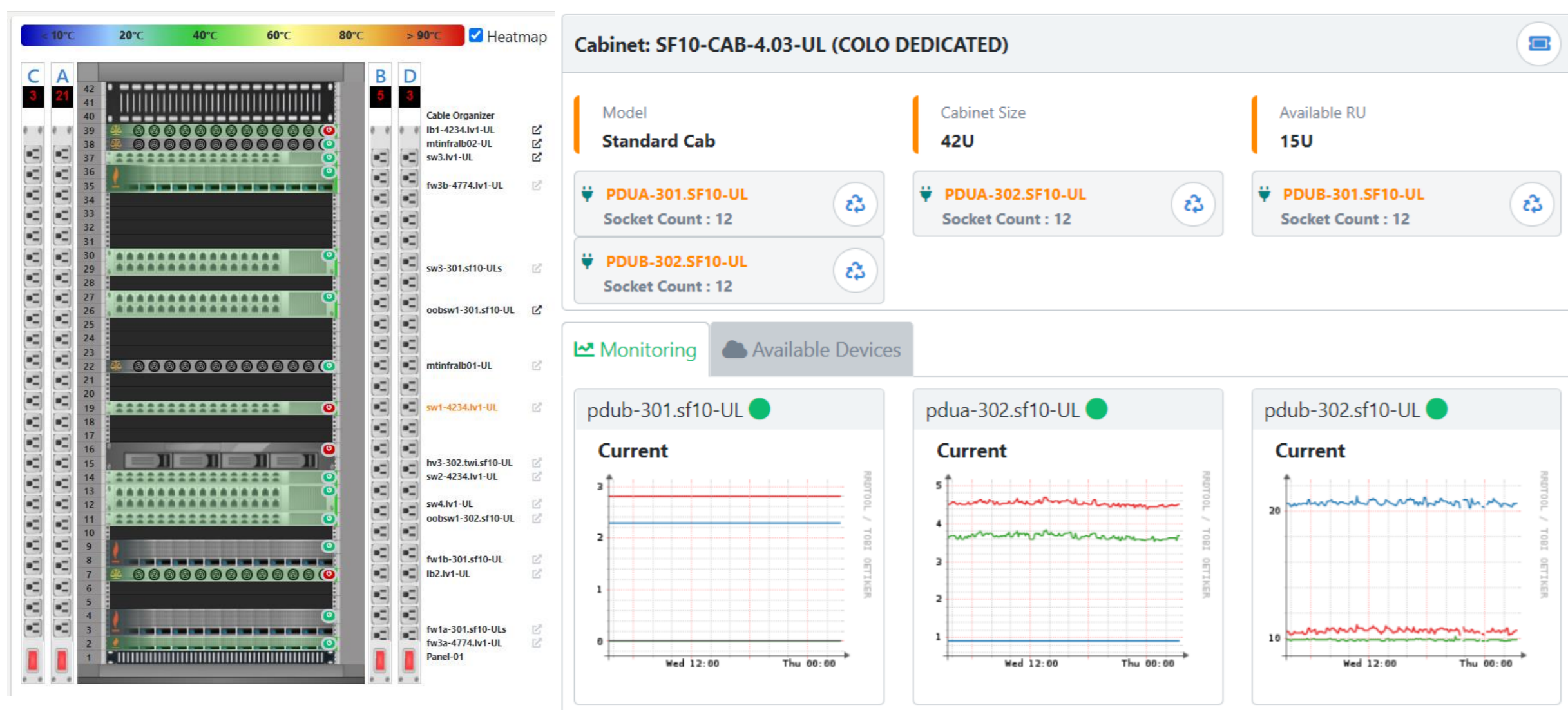
Offers advanced service management vision for your network equipment and other cloud service resources spread globally by providing APIs and protocol.



Observability

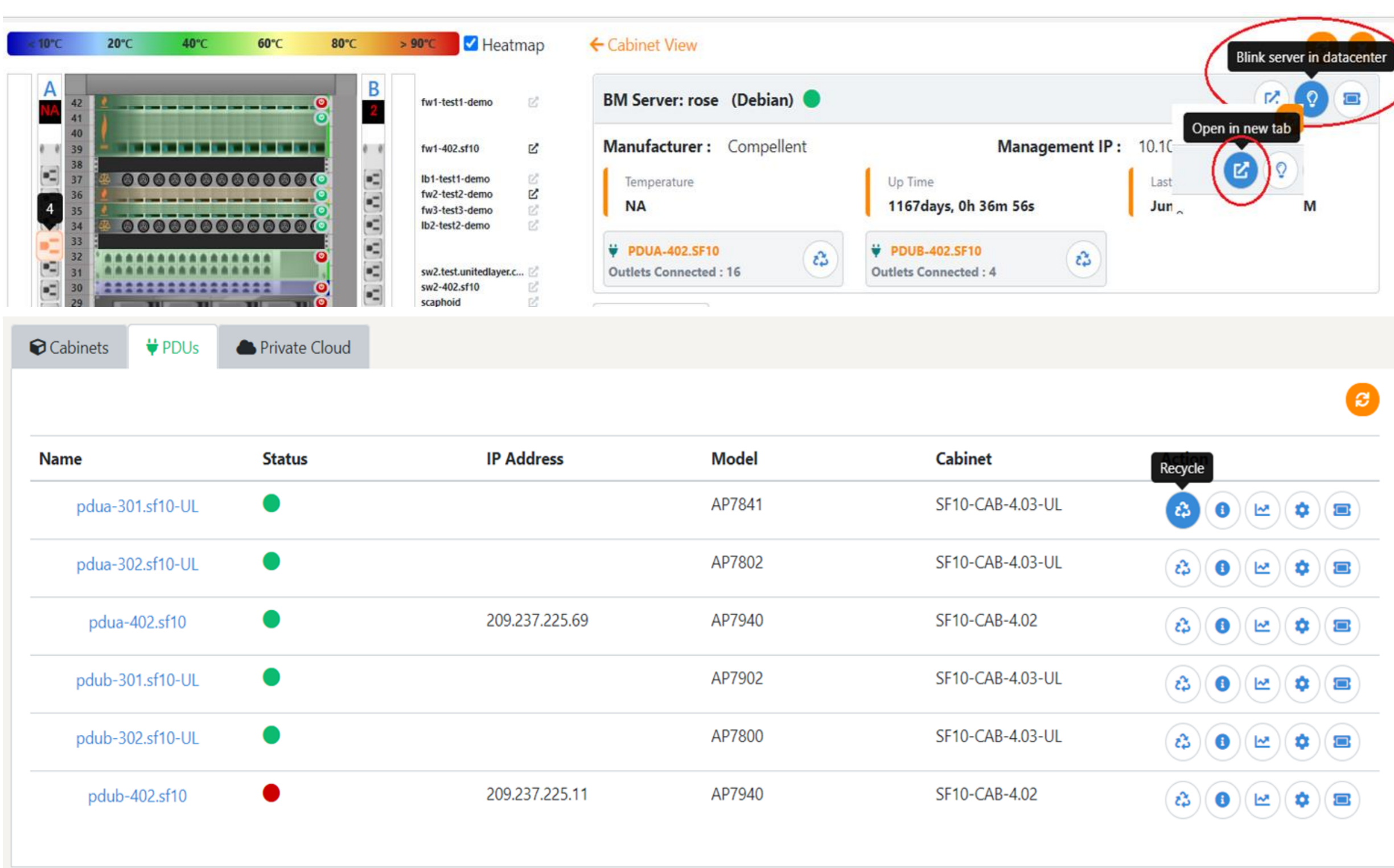
Get monitoring information such as device status, alerts, RU capacity, temperature, and power utilization details for each cabinet box.

DATA CENTER OBSERVABILITY



Visualize your Data Center cabinets to enhance information in ways that make sense to get more out of your data. Get comprehensive real-time observability into your Data Centers and Multicloud Infrastructure through interactive widgets, utilization charts, and live status. Practice effective use of space, power, and cooling capacity based on real-time data.

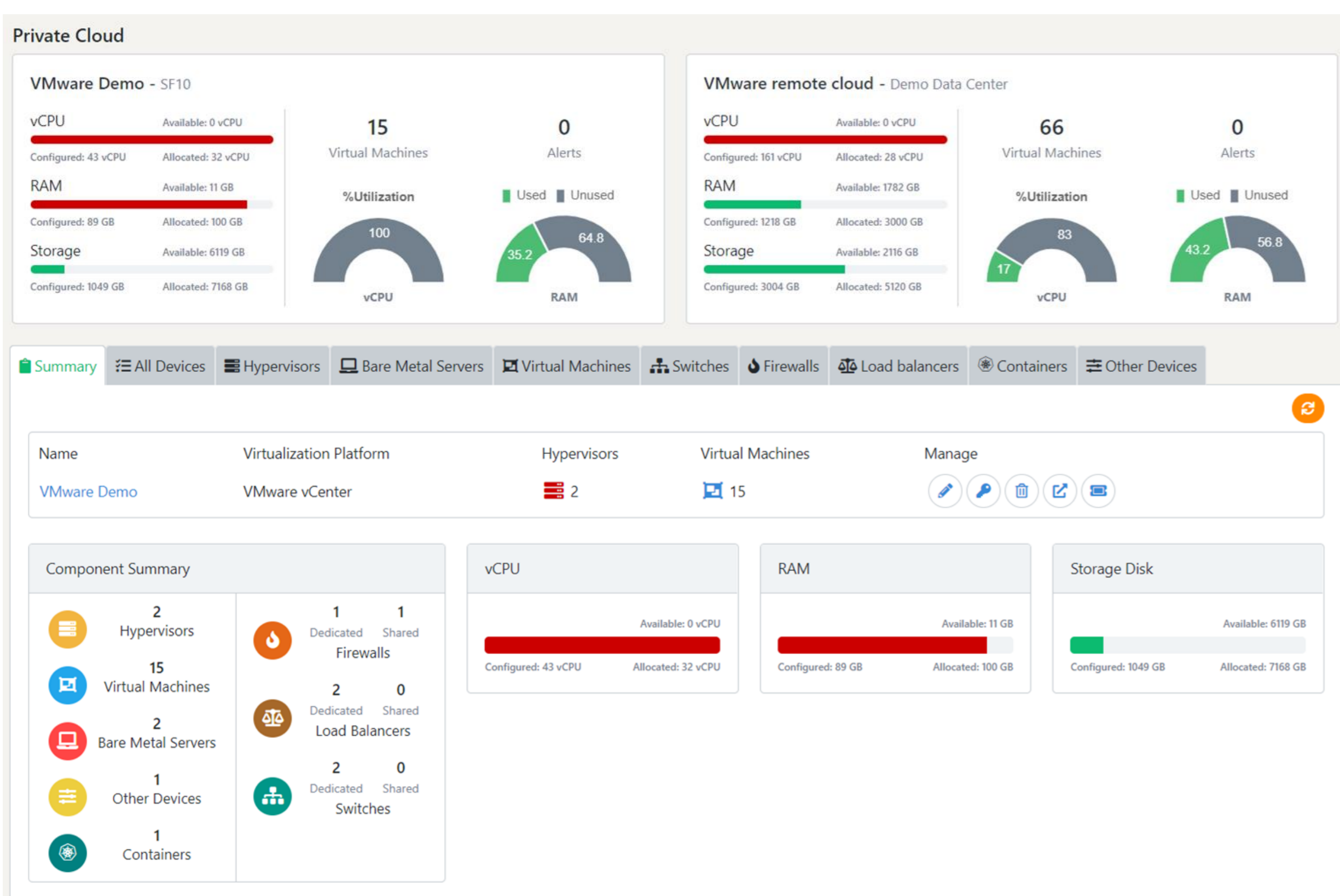
DATA CENTER MANAGEMENT



Understand your data center's health and capacity thresholds in one single view and manage all your devices via SSH/RDP/Web. Improve your uptime and take Informed capacity planning decisions by managing and recycling your PDU's remotely on a single click.

Improve your technician's efficiency by using device blinker to remotely identify the cabinet's device and perform remote engineering tasks.

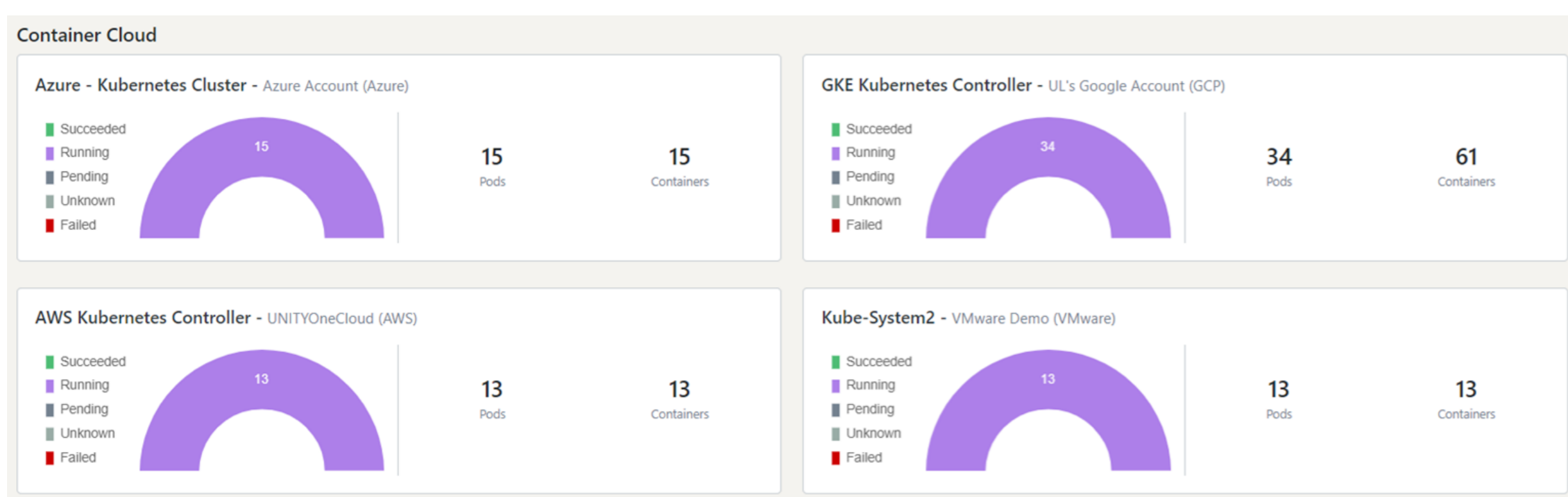
PRIVATE CLOUD MANAGEMENT & MONITORING



Reduce costs, improve infrastructure efficiency, and close security holes through unified visibility into all your Private Clouds like VMware, OpenStack, OVM, Hyper-V, etc. across the globe.

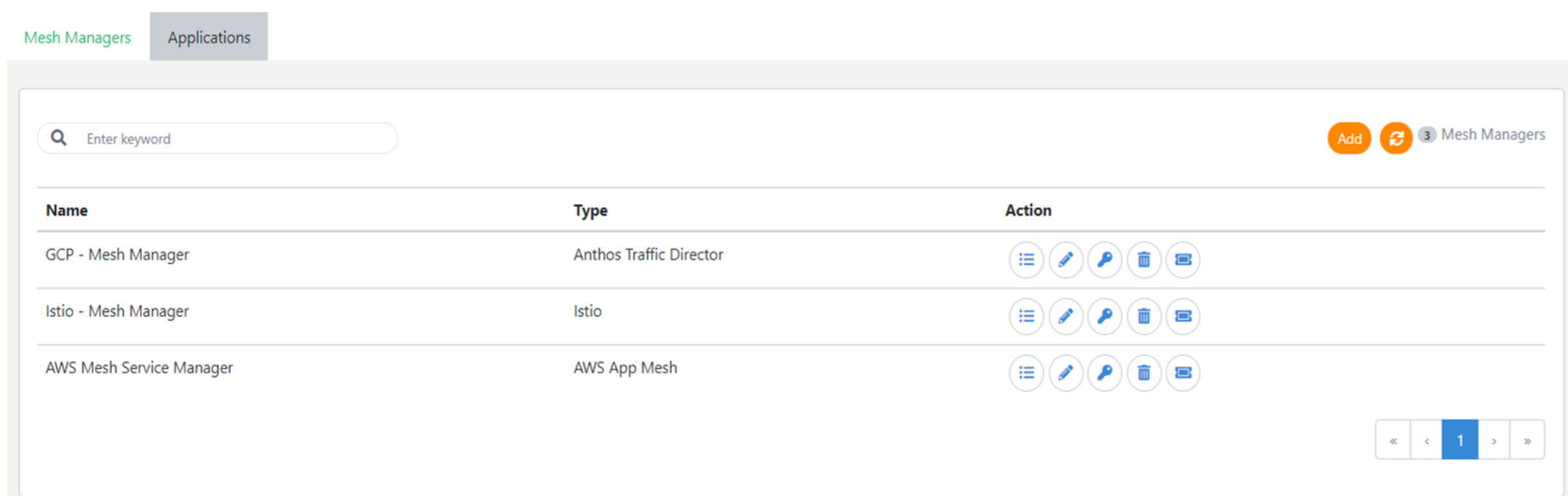
Optimize your resource and service usage to keep cloud costs down by managing your cloud components like Virtual Machines, Hypervisors, Storage, etc. via Console & Web.

KUBERNETES & CONTAINERS



A fully managed Kubernetes cluster service with web-based interfaces, and real-time monitoring that helps you to focus strictly on deploying applications. View the real-time health status of Kubernetes components like PODs & Containers and also manage the Cluster nodes.

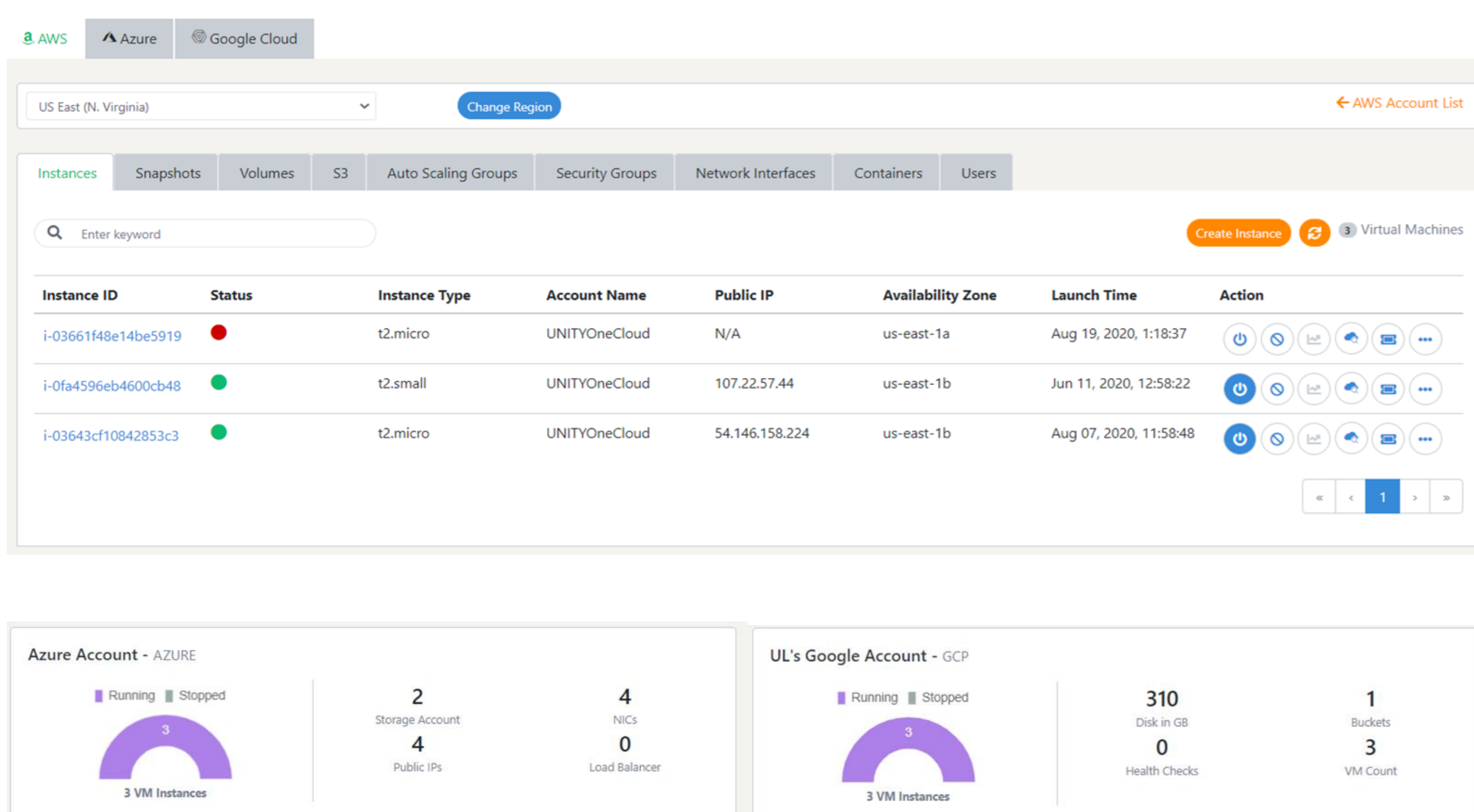
MESH MANAGER



Integrate your Mesh Manager services like Google Anthos Traffic Director, AWS App Mesh, and Istio Mesh Managers to globally manage & monitor services hosted on private/public cloud VMs or containers. Manage your security and networking changes globally and remove the need to apply them separately to individual service.

Service Tree view of Mesh Managers will help you to understand the redundancy level of the respective services.

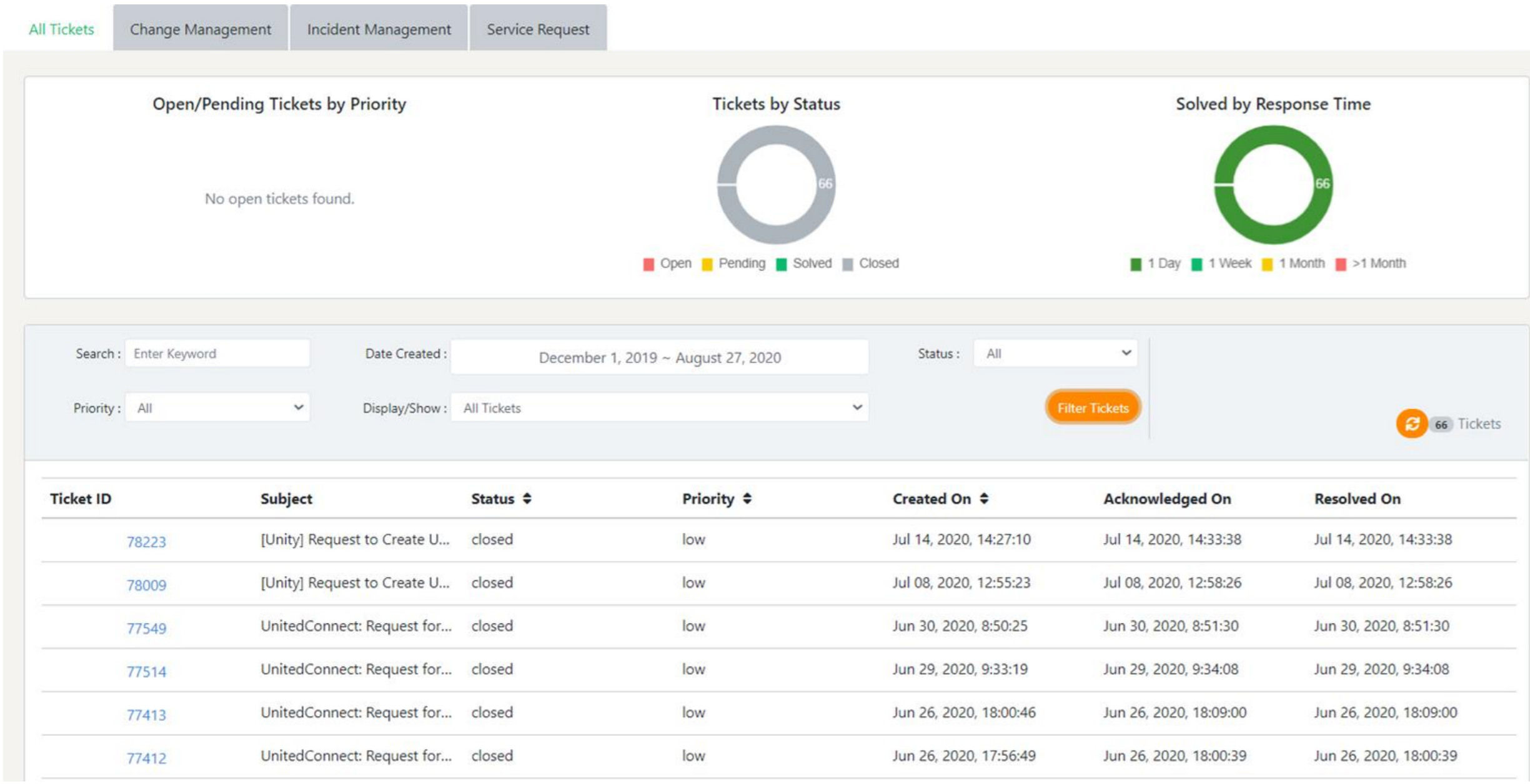
PUBLIC CLOUD MANAGEMENT & MONITORING



Get a comprehensive view of all your Public Clouds like AWS, MS Azure & Google GCP across the regions. Integration of Public Clouds to UnityOneCloud enables you to perform all kinds of actions like provision/termination of resources on Public Cloud via UnityOneCloud.

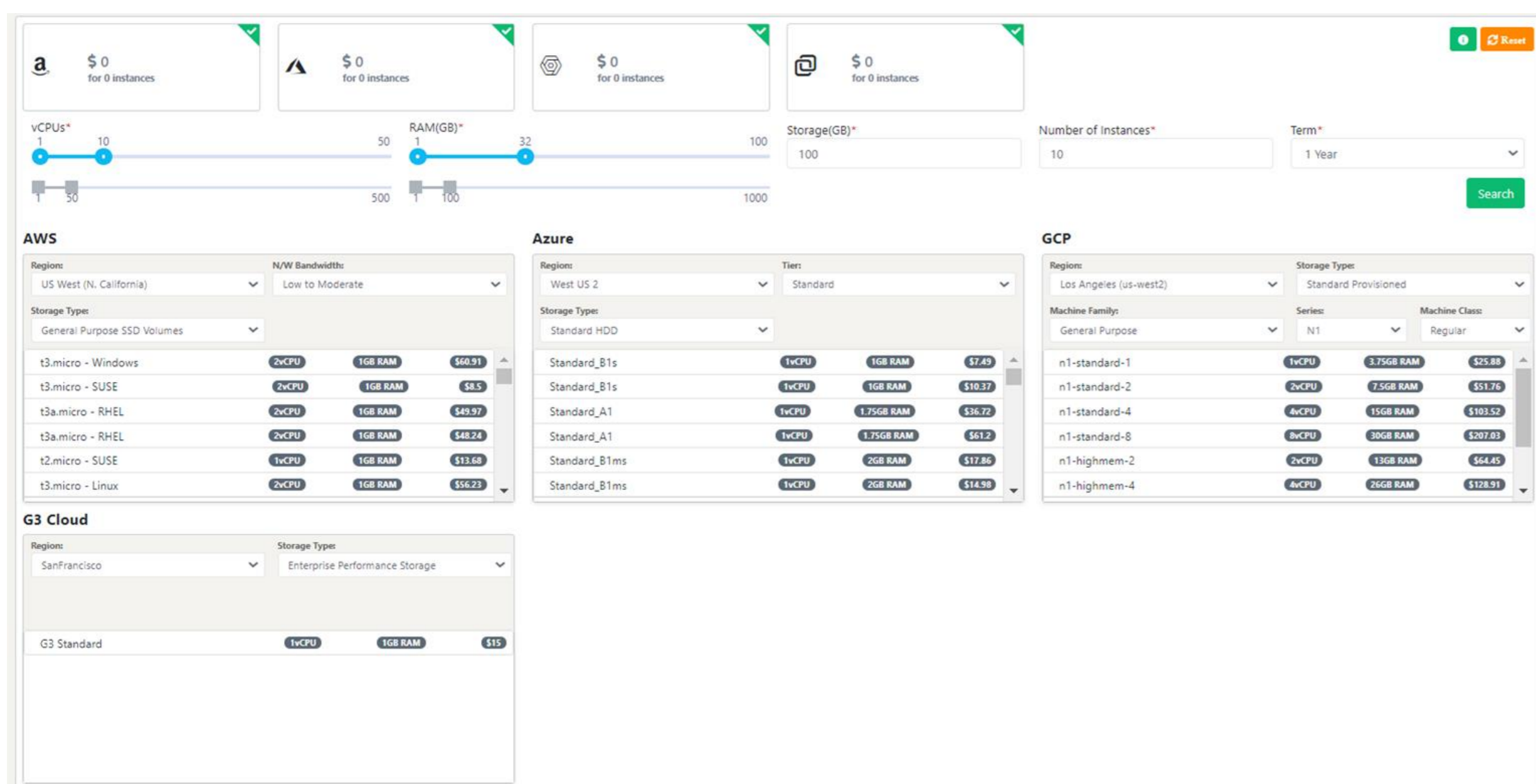
The Public Cloud Monitoring feature enables you to monitor your Public Cloud instances via UnityOneCloud monitoring.

TICKETING & SUPPORT



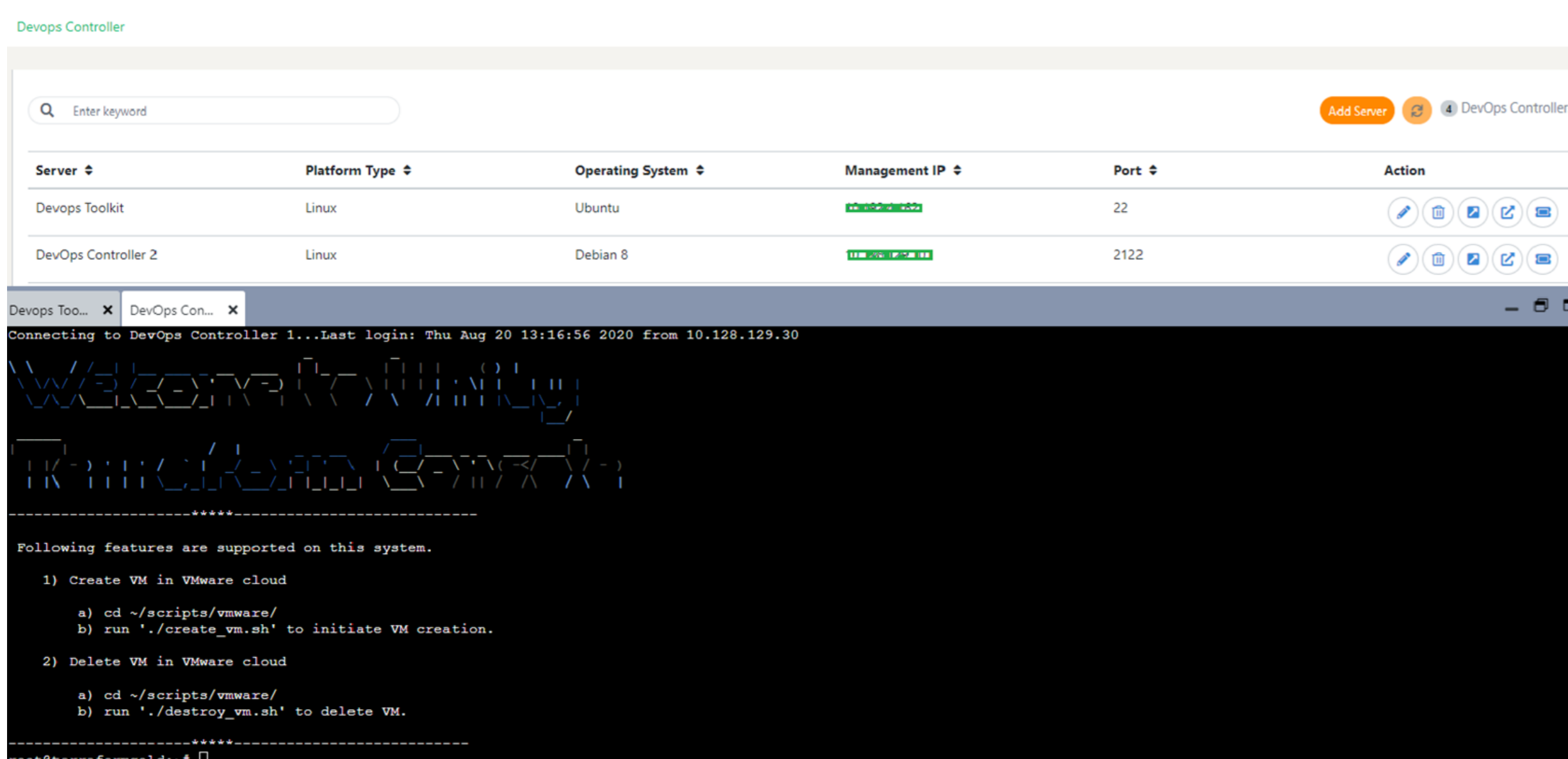
UnityOneCloud Ticket management allows you to streamline your customer queries, optimize customer interactions, and cut-back on resolution times. Track & Measure your IT service desk performance by creating custom reports right from the user interface.

COST CALCULATOR



Reduce your cloud's capital costs by comparing the costs against Azure, AWS, GCP & UnitedPrivateCloud for the required setup and decide on the build in a cost-effective manner. Get a holistic approach and consider the total cost of using and maintaining your private or public cloud environments.

DEVOPS-AS-A-SERVICE



Automate your traditional operations to meet the business unit's needs faster and lower the costs & time for development, testing, deployment, and operations. UnityOneCloud DevOps as a Service helps in server management, OS patching, setting up CI/CD to automate the deployments, testing, report generation, etc. You can have your Centralized DevOps Controller, which takes care of all the cloud automation tasks.

ACTIVITY LOG & ALERT

Gather, analyze, and correlate data from multiple security systems and devices across the infrastructure to streamline your IT department, making them more efficient and effective. Track all user actions like login/logout, add/remove devices, power on/off devices, etc. within the infrastructure.

Configure alerts for your devices as per the threshold value predefined in the system and get notified of the violation of these thresholds as a failed alert.

Activity Logs

Select Date Range: August 14, 2020 – August 28, 2020 [Download](#)

Enter keyword 988 Logs

Entity type	Entity name	User	Action	Source IP	Time	Changes
user	vkumar-unity@unitylayer.com	vkumar-unity@unitylayer.com	Login	106.202.98.242	Aug 28, 2020, 4:46:20	
user	suraj-unity@unitylayer.com	suraj-unity@unitylayer.com	Login	116.74.156.176	Aug 28, 2020, 0:51:28	
kubernetes containers	prometheus-to-sd-new-model	System	Created	N/A	Aug 27, 2020, 20:37:04	
kubernetes containers	prometheus-to-sd	System	Created	N/A	Aug 27, 2020, 20:37:04	
kubernetes pods	prometheus-to-sd-h7gpg	System	Created	N/A	Aug 27, 2020, 20:37:04	
kubernetes containers	prometheus-to-sd-new-model	System	Created	N/A	Aug 27, 2020, 20:37:04	
kubernetes containers	prometheus-to-sd	System	Created	N/A	Aug 27, 2020, 20:37:04	
kubernetes pods	prometheus-to-sd-8hq9f	System	Created	N/A	Aug 27, 2020, 20:37:04	
kubernetes containers	prometheus-to-sd-new-model	System	Created	N/A	Aug 27, 2020, 20:37:04	

UNITYONECLOUD ONBOARDING

Devices Onboard

CONNECT TO UNITY

ONBOARD ASSETS

MONITORING

MANAGEMENT

UNITYOneCloud supports two types of Configuration to onboard your devices i.e Agentless and Agent driven. In the Agentless Configuration, Connectivity needs to be established via IPSec VPN tunnel. And for the Agent Configuration, a VM to be installed at customer subnet to deploy the UNITY agent packages and we will need a 1:1 NAT mapping to give the agent VM a public IP for Unity master agent to talk directly.

In this phase, you can perform auto discovery of devices in your network. Also download, fill and upload the Onboarding Template with all the details updated.

In this section you can enable monitoring of all your onboarded devices provided SNMP is configured. Please contact support@unityonecloud.com for further assistance with SNMP configuration. Also download, update & upload the VM lists from respective clouds to enable Monitoring of VMs.

Activate Management via web console for Private Cloud, Hypervisors & network Devices.

Simplify the process of onboarding your devices to the network in four simple steps/phases and simplify your inventory collection by implementing automation to Auto-Discover your devices within the subnets across your network infrastructure globally.

UnityOneCloud Advantage

UnityOneCloud is a Multicloud Management SaaS Platform for managing your Real Hybrid Cloud Environment, including Data Centers, Power Distribution Units (PDUs), Bare-Metal Servers, Networking Devices, Private Clouds (VMware, HYper-V, and OpenStack), and Public Clouds (AWS, GCP, and Azure).

For more information about UnityOneCloud, visit us online at <https://unityonecloud.com/>

UnityOneCloud
San Francisco, CA

For General/Sales Enquiries
Call: +1-888-853-7733
Email: sales@unityonecloud.com



U.S.A | Canada | U.K | India